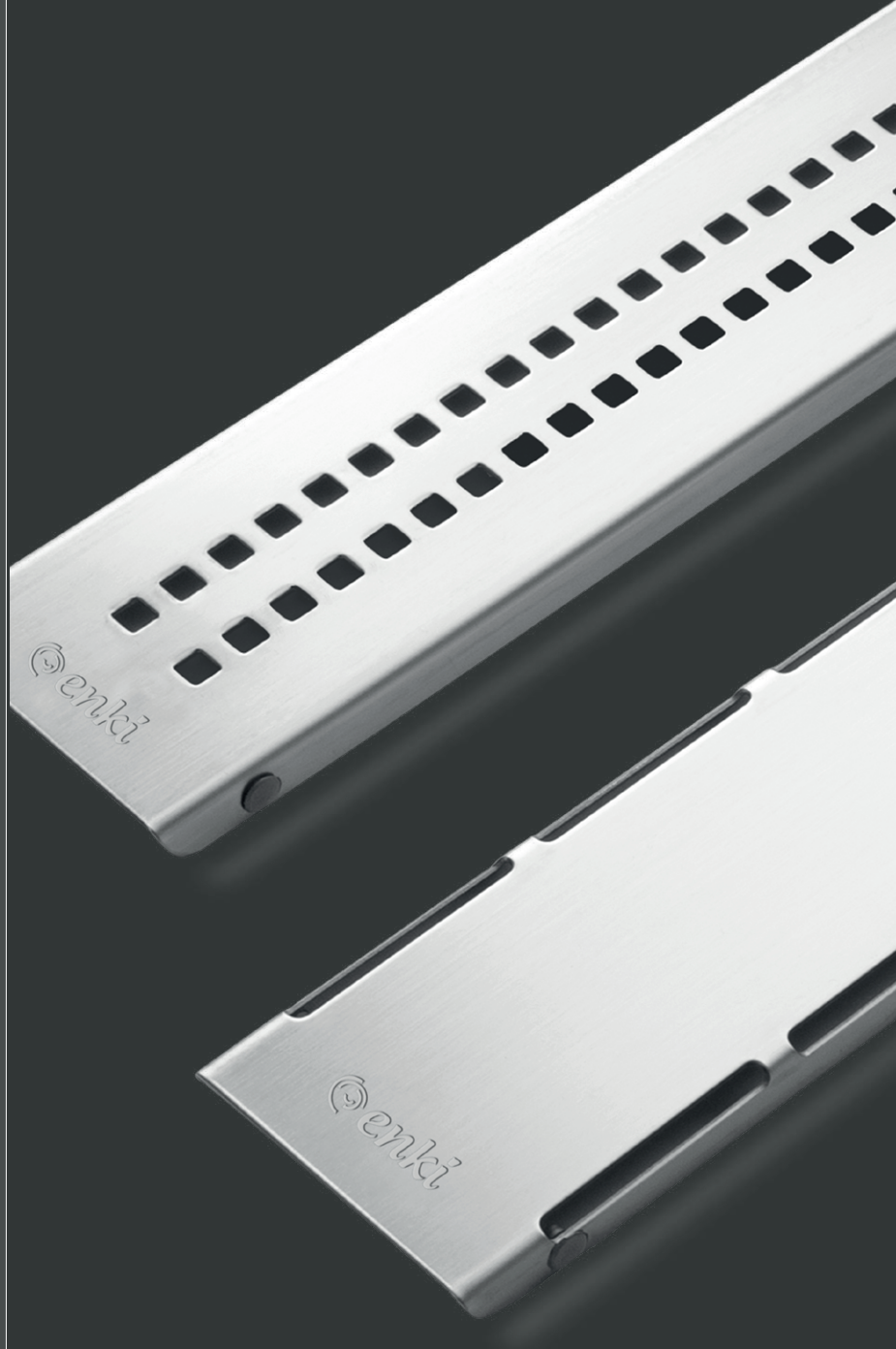


Product Catalogue

Product Details and Images



2026

Shower Drains and Floor Drains
and much more...

www.enkimetal.com.tr



6000 m2 Closed
Production Area

Enki

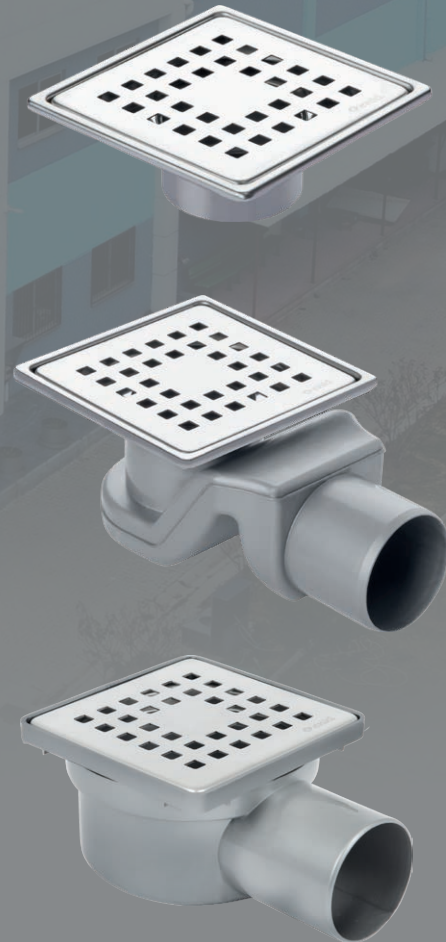
Drain

We Produce With 37
Years of Experience



Headquartered in Izmir, Turkey, our company has
a 6,000 m² indoor production area and an annual
production capacity of 1.5 million units.

Floor Drains



Shower Drains



and much more...

With Enki, Water Goes,
Quality Remains!

Enki Metal manufactures stainless steel sanitary drains, linear drains, and modular drainage channels for industrial use. It supplies a wide range of products and continues to expand its product range through its ongoing R&D efforts.

Our company designs and supplies products that provide complete drainage solutions for indoor and outdoor spaces. We utilize the hygiene advantages of stainless steel and continually expand our service offerings. Our dynamic team, driven by our knowledge and expertise in stainless steel and constantly striving for improvement, boasts machinery and equipment at our production site, including hydraulic and eccentric presses, press brakes, and a welded fabrication department. Our organization boasts a full range of design and manufacturing capabilities.

Simple, Modern, and
Elegant

Enki

2600 Pro

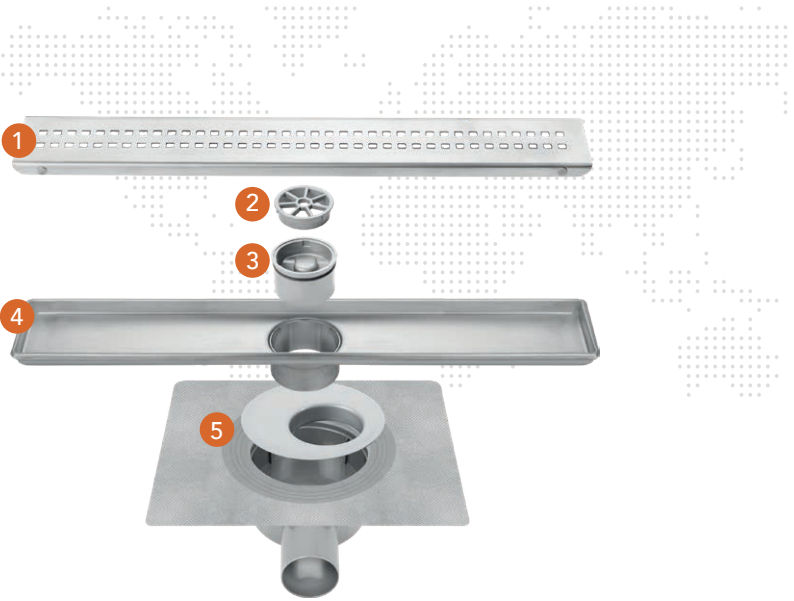
Stainless Steel Shower Channels

A Quality Touch for Your Bathrooms

The 2600 Pro Series, with its simple and modern design, blends seamlessly with any decor. Its elegant lines and high-quality workmanship add a sophisticated touch to your living spaces.

Product Details

- 1. Stainless Steel Grate
- 2. Garbage Trap
- 3. Odor Control Valve
- 4. Stainless Steel Case
- 5. Insulation Kit



Practical Shower Set with 304 Quality Stainless Steel Case, Kokumatik (Odor-matic) Odor Preventer

These Products Are Used With Enki 6000 Series Insulation Kits.

Product
Advantages



Easy Cleaning

Easy to clean thanks to its stainless steel material. Remains hygienic.

Odor Prevention Valve 3

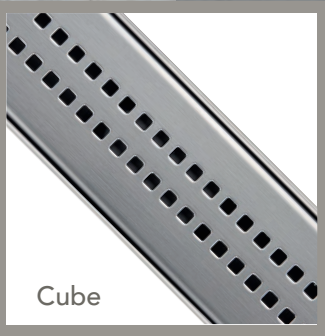
Developed by Enki Metal, the Kokumatik (Odormatic) Valve system, thanks to its special mechanism, only opens when water is flowing. This serves as a protective measure.



Length	Width (b)	Height (h)	Outlet Diameter	Grill Type	Product Code	Number of Pieces in a Box
40 cm	6 cm	4,5 cm	Q50	Plain	2601-0304000-01V	10
60 cm	6 cm	4,5 cm	Q50	Plain	2601-0306000-01V	10
40 cm	6 cm	4,5 cm	Q50	Cube	2601-0404000-01V	10
60 cm	6 cm	4,5 cm	Q50	Cube	2601-0406000-01V	10



Plain



Cube

Grid Types

Create Your Desired
Style with Square and
Plain Grid Types

One Step
Ahead in Insulation

Enki

2200 Pro Slim

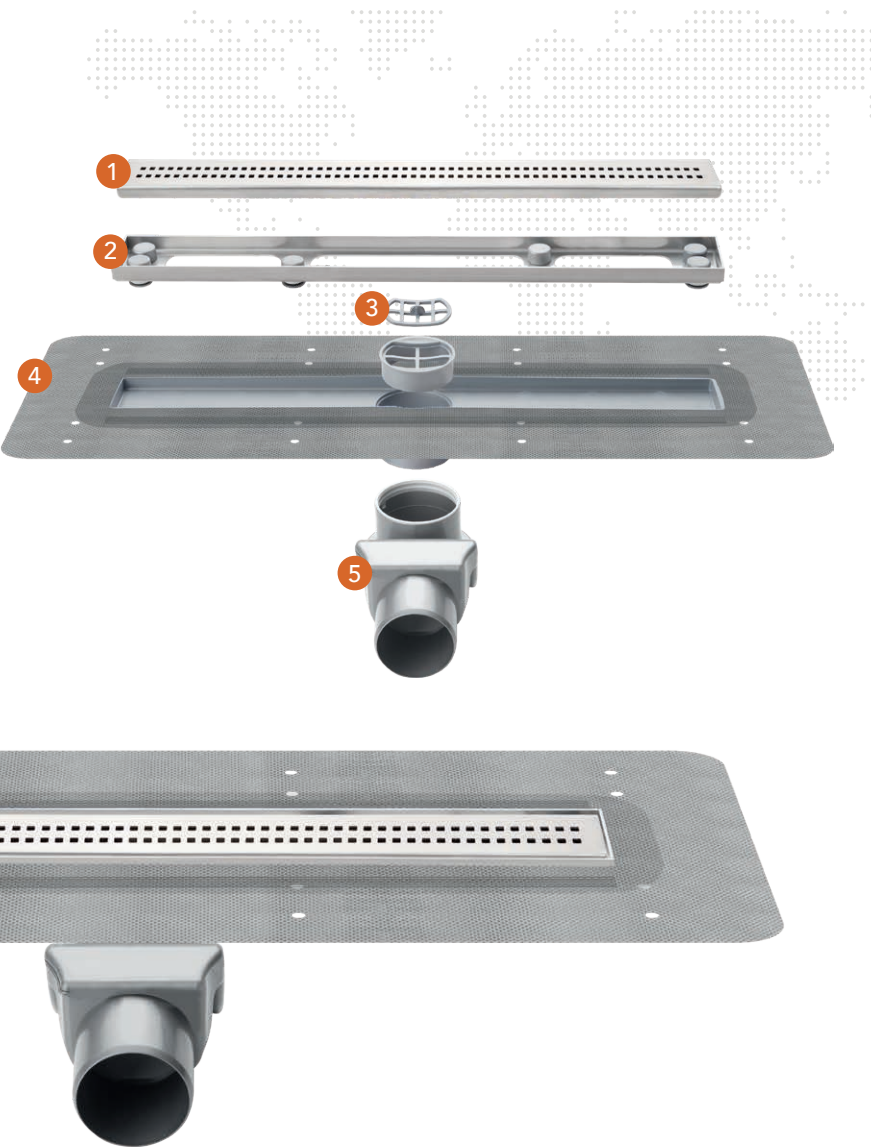
One Step Ahead in Insulation

A Hassle-Free Experience

Its twin-drain feature and textile skirt on the upper body provide advantages in insulation. The textile skirt helps the product integrate with the screed and strengthens the insulation.

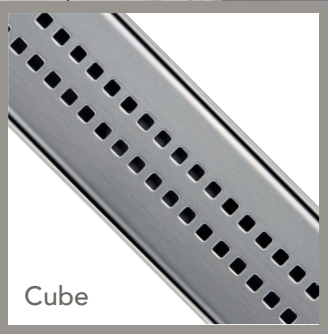
Product Details

- 1. Stainless Steel Grate
- 2. Stainless Steel Frame
- 3. Garbage Trap
- 4. Membrane Insulation Kit
- 5. Bottom Bowl with S.



Grid Types

Stylish and Functional at Once, Thanks to the Slim and Thin Case



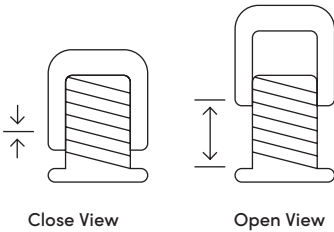
Product Advantages ↓

Textile Skirt

Make a Difference with the Textile Skirt 100% Compatible with All Liquid Insulation Products!

Adjustable Height

Height-adjustable feet simplify installation and allow for the pouring of sloped concrete at the desired height. This allows you to position the height up to 1 cm.



Length	Width (b)	Height (h)	Outlet Diameter	Grill Type	Product Code	Number of Pieces in a Box
40 cm	4,5 cm	7,8 cm	Q50	Cube	2211-0484081-11P	50
50 cm	4,5 cm	7,8 cm	Q50	Cube	2211-0485081-11P	40
60 cm	4,5 cm	7,8 cm	Q50	Cube	2211-0486081-11P	30

Hidden Shower Drain

Enki

2600 Pro Seramik

Ceramic Compatible Shower Channel

Integrate with the Decor

This ceramic-compatible drain, which maintains the integrity of the bathroom's design, blends seamlessly with the flooring for a sleek, minimalist look. Unlike standard drains, it becomes invisible by being embedded with ceramic, creating a seamless design in your bathroom.

Product Details

The ceramic-compatible drain is both an aesthetic and practical drainage solution for modern bathrooms. Choose this innovative solution to ensure perfect design and hygiene in your bathroom.

Ceramic Applied Image

Grill Type

Integrate with the floor thanks to the ceramic compatible grate type



Ceramic Comp.

Product Advantages



These Products Are Used With Enki 6000 Series Insulation Kits.

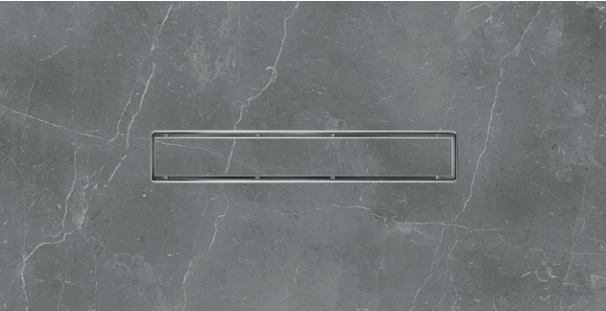
Aesthetic and Stylish Design

Thanks to the use of the same material as the floor covering, the drain is not noticeable on the surface.

Concealed Drainage System

The Kokumatik (Odormatic) Valve system, developed by Enki Metal, operates with a special mechanism that only opens when water is flowing. This serves as a protective measure.

You can place any ceramic you want inside.



Length	Width (b)	Height (h)	Outlet Diameter	Grill Type	Product Code	Number of Pieces in a Box
40 cm	6 cm	4,5 cm	Q50	Ceramic Compatible	2601-0504000-01P	10
60 cm	6 cm	4,5 cm	Q50	Ceramic Compatible	2601-0506000-01P	10

Correct Insulation
Correct Brand

Enki

6000 Serisi

Insulation Kits

Insulation Fabric

Bathrooms and showers are among the areas where water is used most frequently. If proper insulation is not installed in these areas, water leaks can occur over time, severely damaging structural elements. Therefore, using specially designed waterproofing kits provides long-lasting and durable solutions.

Product Details

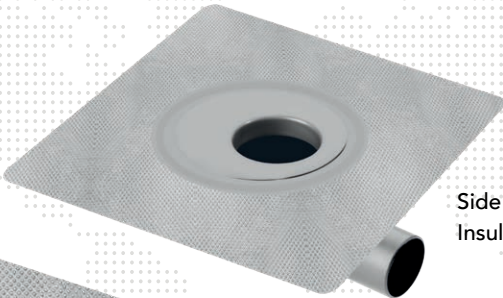
Special textile fabrics found in insulation kits provide extra durability and flexibility to the insulation materials. When used with waterproofing mortar or liquid membrane, these fabrics adhere perfectly to the surface and prevent cracks from forming.

Example of Use

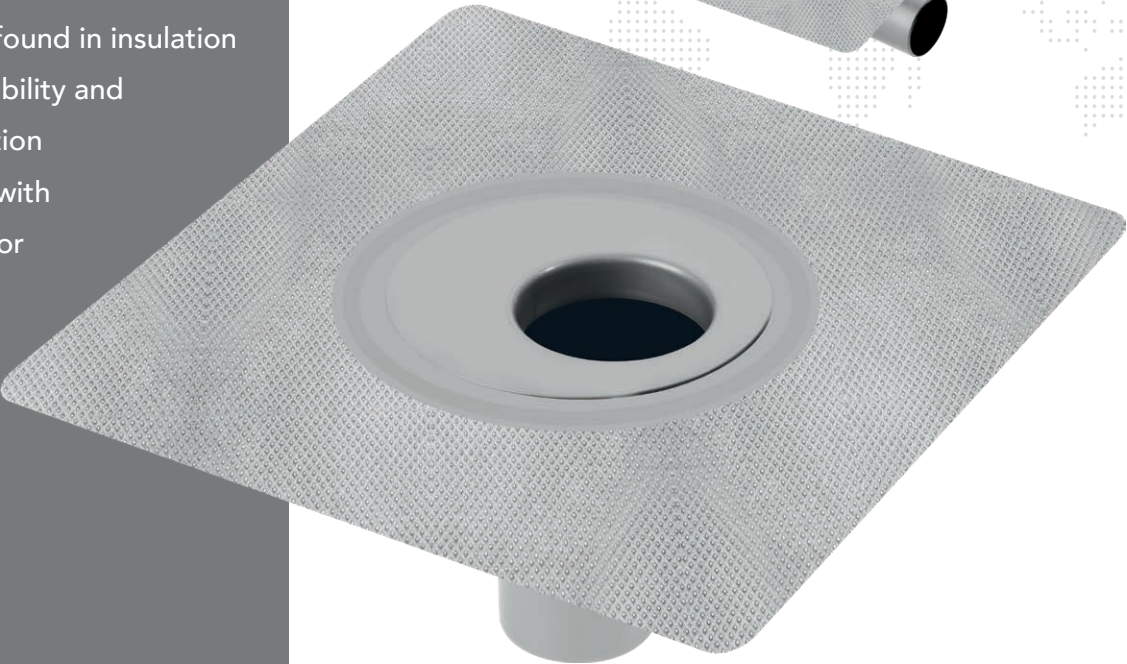
Product Advantages



These Insulation Kits are Used with 2600 Pro Series Shower Channels and 3900 Series Floor Drains.



Side Exit
Insulation Kit



Bottom Outlet Insulation Kit

Don't Face Nasty Surprises


Renovating bathroom and shower areas is a costly and tedious endeavor. Proper insulation will protect you from these problems for many years.

Secure Your Strainer to the Insulation

Secure your drains with insulation thanks to the textile membrane insulation kits developed by Enki Metal.



S'li Alt Tas

Product Code	Outlet Diameter	Exit Direction	Number of Pieces in a Box
6010-0080050-11P	Q50	Yandan	100
6010-0080052-11P	Q50	Alttan	100
 5020081-01P	Q50	Yandan	150

Where Elegance and
Function Meet

Enki

2400 Eco

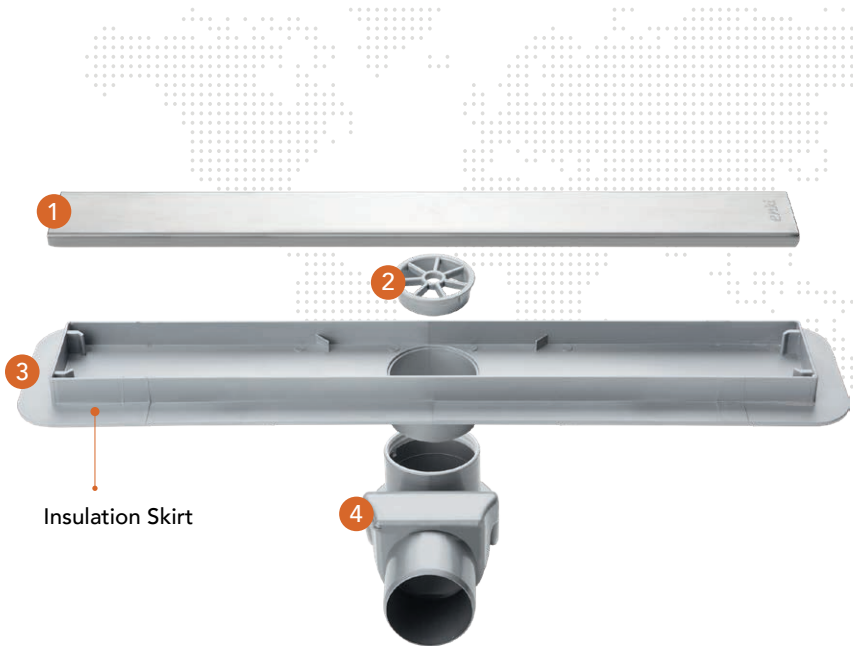
Economical Shower Channels

A Quality Touch for
Your Bathrooms

Our Slim Plain model, with its elegant thin grille, is the perfect choice for transforming your bathrooms and kitchens in a way that is both stylish and functional.

Product Details

1. Stainless Steel Grate
2. Garbage Trap
3. Plastic Case with Insulating Skirt
4. Bottom Bowl with S.



Grid & Colors

Available in Plain Grid
Model, Stainless Steel,
and Black.



Product
Advantages



Stylish Design

Stylish and high quality from every
angle thanks to its thin Slim grille.

Rotatable S-shaped

Its 360° rotatable structure allows for easy
installation. Its S-shaped bottom bowl
prevents unpleasant odors.

Color Option



Length	Width (b)	Height (h)	Outlet Diameter	Grill Type	Product Code	Number of Pieces in a Box	Color
40 cm	5,5 cm	8,6 cm	Q50	Plain	2430-0374081-11K	52	Stainless
60 cm	5,5 cm	8,6 cm	Q50	Plain	2430-0376081-11K	32	Stainless
40 cm	5,5 cm	8,6 cm	Q50	Plain	2430-0374081-31K	52	Black
60 cm	5,5 cm	8,6 cm	Q50	Plain	2430-0376081-31K	32	Black

Quality and Function
Combined

Enki

4000 Serisi

Floor Drains

A Quality Touch for Your Bathrooms

Self-curved and clawed bottom
body, odor-safe plumbing
strainers

Product Details

Our Enki 4000 Series products
use 304-grade stainless steel
grates. They have a plastic casing.
The bottom bowl rotates 360°.

Enki 4000 Eco 15x15 cm
Yandan Çıkışlı



Enki 4000 Eco 10x10 cm
Bottom Exit

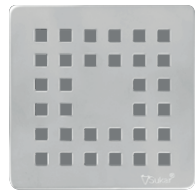


Product
Advantages



Grid Types

It offers stylish
solutions with its
circular grille and
square grille models.



10x10cm Cube



Circle



304 Quality Stainless

Thanks to its stainless steel grate, it
provides the advantage of long-term
use.

More Durable Design

The serration on the lower body and
lower surface increases the adhesion
to the screed.

Square Circle

EnkiSquare-Circle adds elegance to your
modern living spaces with its circular
design and makes a difference with its
superior performance.

Grid Dimensions	Height	Outlet Diameter	Exit Direction	Grill Type	Product Code	Number of Pieces in a Box
10x10 cm	6,5 cm	Q50	Side	Cube	4011-0701050-11P	50
10x10 cm	4,5 cm	Q50	Bottom	Cube	4012-0701051-11P	60
15x15 cm	6,5 cm	Q50	Side	Cube	4011-0701550-11P	32
15x15 cm	6,5 cm	Q70	Side	Cube	4011-0701570-11P	32
15x15 cm	8,5 cm	Q50	Bottom	Cube	4012-0701551-11P	27

Rediscover
Quality

Enki

3900 Pro

Floor Drains

A Quality Touch for Your Bathrooms

Enjoy many years of problem-free
use of your shower areas with
the quality materials used in the
Square Pro series.

Product Details

- 1. Stainless Steel Grate
- 2. Garbage Trap
- 3. Odor Control Valve
- 4. Stainless Steel Bottom Frame



10x10 cm



15x15 cm



Example of Use

Product Advantages

304 Quality Stainless

Thanks to its stainless steel grate, it
provides the advantage of long-term
use.

More Durable Design

The serration on the lower body and
lower surface increases the adhesion
to the screed.

Odor Prevention Valve ³

The Kokumatik (Odomatic) Valve system,
developed by Enki Metal, operates with
a special mechanism that only opens
when water is flowing. This serves as a
protective measure.



These Products Are Used With Enki 6000 Series Insulation Kits.

Grid Dimensions	Height	Outlet Diameter	Grill Type	Product Code	Number of Pieces in a Box	Odor Preventer
10x10 cm	4 cm	Q50	Cube	3901-0701000-01P	39	Klape
15x15 cm	4 cm	Q50	Cube	3901-0701500-01P	32	Klape

Quality and Function Combined

Enki 3900 Pro S Floor Drains

Provides Long-Term Quality Use

Enjoy many years of problem-free use of your shower areas with the quality materials used in the 3900 Pro S series.

Product Details

- 1. Stainless Steel Grate
- 2. Garbage Trap
- 3. Stainless Steel Bottom Frame
- 4. S-shaped Bottom Bowl



Example of Use

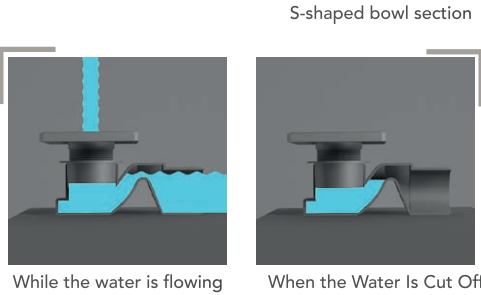
Product Advantages

304 Quality Stainless Steel

The stainless steel grill provides years of use. Enjoy hygiene and quality.

4 Thanks to the S-shaped bottom bowl, No more bad odors!

The Kokumatik (Odormatic) Valve system, developed by Enki Metal, opens only when water is flowing, thanks to its special mechanism. Thus, it serves as a protection.



Grid Dimensions	Height	Outlet Diameter	Grill Type	Product Code	Number of Pieces in a Box	Odor Preventer
10x10 cm	7 cm	Q50	Cube	3900-0701081-01P	39	Klapa
15x15 cm	7 cm	Q50	Cube	3900-0701581-01P	32	Klapa

Get Ahead in
Application & Insulation

Enki

3100 Pro Series

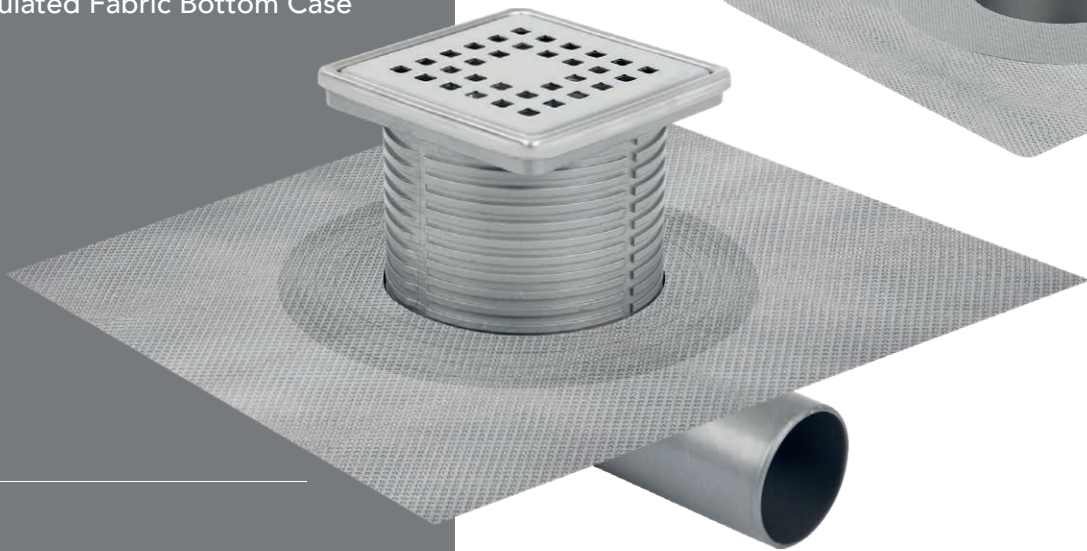
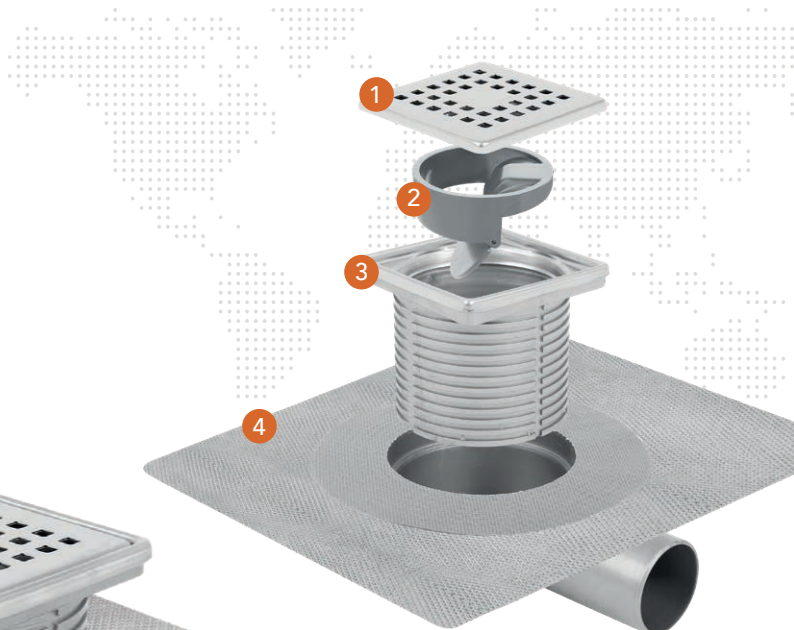
Stainless Steel Floor Drain

Water Goes, Quality Stays With You

Experience the quality of Enki with its features such as 304 quality stainless steel frame and grill, unlimited height opportunity with the elevation apparatus, water and waterless odor preventer, twin drain feature, and mesh skirt integrated with the lower body.

Product Details

- 1. Stainless Steel Grate
- 2. Water/Waterless Odor Control
- 3. Stainless Steel Bottom Case
- 4. Insulated Fabric Bottom Case

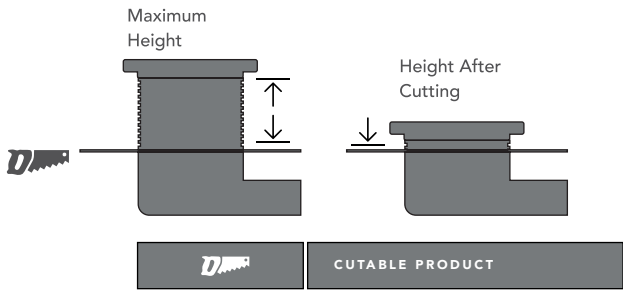


Example of Use

Product Advantages

Easily Adjust to Your Desired Height

Thanks to the cuttable base developed by Enki Metal, you can easily apply the product by cutting it with a saw to suit your floor height.



Grid Dimensions	Height	Outlet Diameter	Exit Direction	Grill Type	Product Code	Number of Pieces in a Box
10x10 cm	5,5 cm'den 14,5 cm'e	Q50	Side	Cube	3101-0781050-01P	60
10x10 cm	9,5 cm'den 18,5 cm'e	Q70	Side	Cube	3101-0781070-01P	50
10x10 cm	12,5 cm'den 21,5 cm'e	Q100	Side	Cube	3101-0781010-01P	35
10x10 cm	10 cm'den 19 cm'e	Q50	Bottom	Cube	3101-0781052-01P	60
10x10 cm	10 cm'den 19 cm'e	Q70	Bottom	Cube	3101-0781072-01P	50
10x10 cm	8 cm'den 17 cm'e	Q100	Bottom	Cube	3101-0781013-01P	30
15x15 cm	10 cm'den 19 cm'e	Q50	Side	Cube	3101-0781550-01P	50
15x15 cm	10 cm'den 19 cm'e	Q70	Side	Cube	3101-0781570-01P	50
15x15 cm	8 cm'den 17 cm'e	Q100	Side	Cube	3101-0781510-01P	35
15x15 cm	10 cm'den 19 cm'e	Q50	Bottom	Cube	3101-0781552-11P	50
15x15 cm	10 cm'den 19 cm'e	Q70	Bottom	Cube	3101-0781572-11P	50

One Step Ahead in Insulation

Enki 3100 Eco Serisi

Floor Drainer with Plastic Case

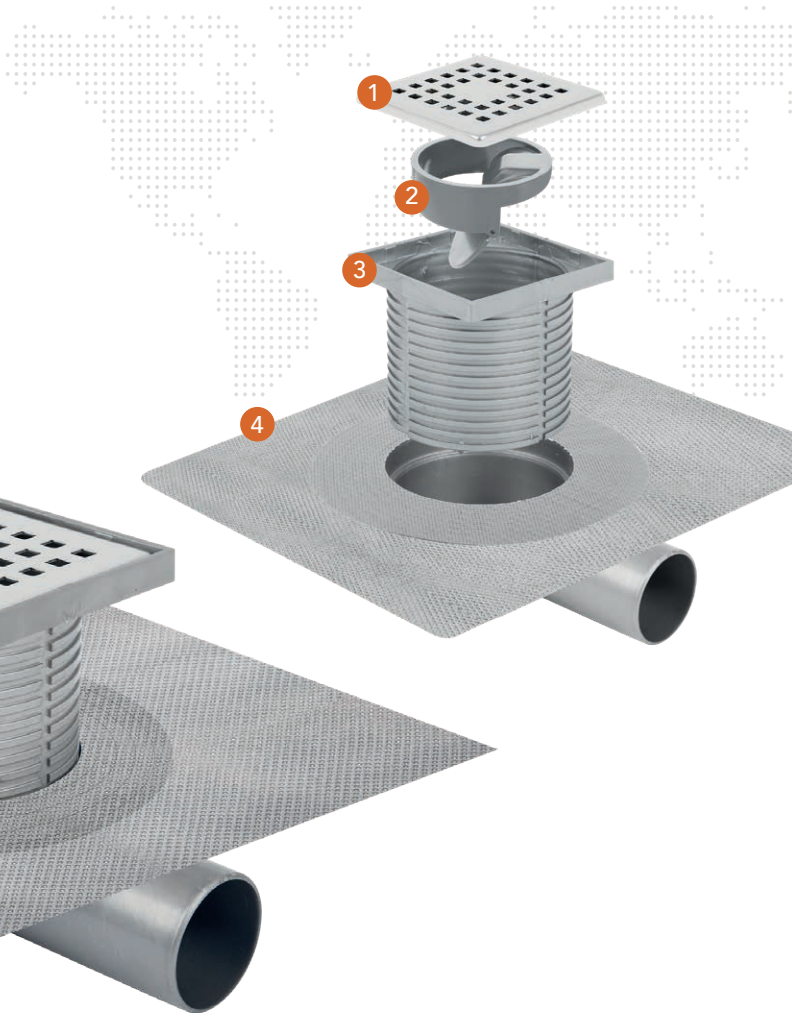
Quality is in the Details

Thanks to its mesh skirt and laminated textile layer, it is 100% compatible with all liquid waterproofing materials.

Experience the quality of Enki Metal with features such as 304 quality stainless steel frame and grill, unlimited height opportunity with the elevation apparatus, waterless odor prevention, twin drain feature, and mesh skirt integrated with the lower body.

Product Details

- 1. Stainless Steel Grate
- 2. Water/Waterless Odor Control
- 3. Plastic Bottom Case
- 4. Insulated Fabric Bottom Case

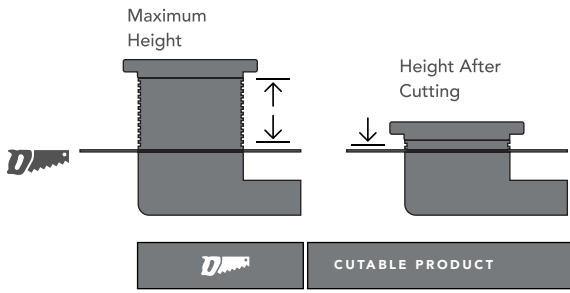


Product Advantages

Example of Use

Easily Adjust to Your Desired Height

Thanks to the cuttable base developed by Enki Metal, you can easily apply the product by cutting it with a saw to suit your floor height.



Grid Dimensions	Height	Outlet Diameter	Exit Direction	Grill Type	Product Code	Number of Pieces in a Box
10x10 cm	10 cm'den 19 cm'e	Q50	Side	Cube	3101-0711050-11P	60
10x10 cm	10 cm'den 19 cm'e	Q70	Side	Cube	3101-0781070-11P	50
10x10 cm	8 cm'den 17 cm'e	Q100	Side	Cube	3101-0781010-11P	35
10x10 cm	10 cm'den 19 cm'e	Q50	Bottom	Cube	3101-0781052-11P	60
10x10 cm	10 cm'den 19 cm'e	Q70	Bottom	Cube	3101-0781072-11P	50
10x10 cm	8 cm'den 17 cm'e	Q100	Bottom	Cube	3101-0781013-11P	30
15x15 cm	10 cm'den 19 cm'e	Q50	Side	Cube	3101-0781550-11P	50
15x15 cm	10 cm'den 19 cm'e	Q70	Side	Cube	3101-0781570-11P	50
15x15 cm	8 cm'den 17 cm'e	Q100	Side	Cube	3101-0781510-11P	35
15x15 cm	10 cm'den 19 cm'e	Q50	Bottom	Cube	3101-0781552-11P	50
15x15 cm	10 cm'den 19 cm'e	Q70	Bottom	Cube	3101-0781572-11P	50

The Unsung Hero of Your Bathrooms

Enki

3900 Pro Ceramic

Ceramic Compatible Floor Drainer

Perfect Harmony

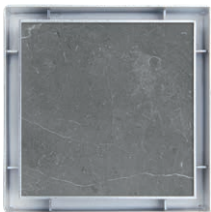
Our drains, which integrate with floor coverings, combine elegance and invisible drainage comfort in bathrooms, kitchens and other wet areas thanks to their innovative design.

Product Details

The ceramic-compatible drain is both an aesthetic and practical drainage solution for modern bathrooms. Choose this innovative solution to ensure perfect design and hygiene in your bathroom.

Usage

Thanks to its two-way use advantage, you can either use it by applying ceramic inside or turn it upside down and use it as a plain grill.



Ceramic Compatible



Plain Grill

Example of Use

Product Advantages

One Strainer, Two Uses!

- 2 Add flexibility to your projects thanks to its double-sided structure. The new plain ceramic compatible grill can be used by turning it upside down and placing ceramic inside.
- 1 If you wish, you can use it as a plain grill.
- 3 Or you can use it compatible with ceramics.



Grid Dimensions	Height	Outlet Diameter	Grill Type	Product Code	Number of Pieces in a Box
10x10 cm	2 cm	Q50	Ceramic Compatible	3901-0501000-01P	20
15x15 cm	2 cm	Q50	Ceramic Compatible	3901-0501500-01P	20

Say Goodbye to Bad Odors and Pests!

Odormatic

Closed View

It prevents bad odors because it remains closed when water is not flowing.



Open View

It only opens when water is running.



Clean Areas, Spacious Places!

Odor preventers provide a hygienic and comfortable environment by preventing bad odors and pests that may occur in drainage systems; they offer long-lasting and reliable use thanks to their durable material and smart mechanism.

How Does It Work?

Odor-Preventing Valves

The odormatic valve is a backflow prevention mechanism that prevents the spread of unpleasant odors in wastewater installations, offering hygienic and comfortable use. It protects indoor air quality by blocking unpleasant odors, pests, and harmful gases from the sewer.

Enki

Odor Eliminators

No Room for Bad Smells and Pests!

1



Waterless Odor Prevention Valve

2



Waterless Odor Control Valve Kokumatik (Odormatic)

1 Waterless Odor Prevention

Feature	Product Code	Height
Waterless	5011000-11P	3 cm

Compatible Models	
Enki 2600 Pro	

2 Waterless Odor Prevention

Feature	Product Code	Height
Waterless	5041-0000000-11P	3 cm

Compatible Models	
Enki 2600 Pro	Enki 2600 Pro Ceramic
Enki 3900 Series	Enki 2400 Series

304 Quality Stainless Steel

Enki

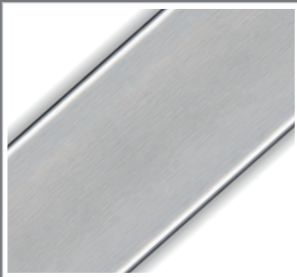
Grills

304 Quality Stainless Steel

Strong, Durable and Timeless!

Our 304-grade stainless steel grates offer superior corrosion resistance and long-lasting durability, providing maximum resistance to water, moisture, and chemicals, while their aesthetic design adds a touch of elegance to your spaces. Because they're made of stainless steel, they're also very easy to clean.

Applied Images



Ceramic Compatible Grill

Length	Product Code
40 cm	-
60 cm	-

Compatible Models	Enki 2600 Pro Ceramic
-------------------	-----------------------

Plain Grill

Length	Product Code	Color
40 cm	5430340-01P	Stainless
60 cm	5430360-01P	Stainless
40 cm	5430340-31P	Black
60 cm	5430360-31P	Black

Compatible Models	Enki 2400 Eco S
-------------------	-----------------

Plain Grill

Length	Product Code
40 cm	5600340-01P
60 cm	5600360-01P

Compatible Models	Enki 2600 Pro	Enki 2400 Eco S
	Enki 2400 Eco P	

Cube Grill

Length	Product Code
40 cm	5600440-01P
60 cm	5600460-01P

Compatible Models	Enki 2600 Pro
-------------------	---------------

Square Cube Grill

Grid Dimensions	Product Code
10x10 cm	5900710-01P
15x15 cm	5900715-01P

Compatible Models	Enki 3100 Pro	Enki 3900 Pro	Enki 4000
-------------------	---------------	---------------	-----------

We Provide Full
After-Sales Support with
Ancillary Products

The strainer frame is a structural element that secures the stainless steel grates, ensuring a seamless installation. The frame ensures efficient water drainage while also increasing the strainer’s durability and longevity.

↙ Exploded Product Image



1 Stainless Framed Upper Body

Dimensions	Product Code	Height
10x10 cm	5050-0001000-01P	9 cm

3 Stainless Framed Upper Body

Dimensions	Product Code	Height
15x15 cm	5050-0001500-01P	9 cm

2 Plastic Framed Upper Body

Dimensions	Product Code	Height
10x10 cm	5010-0001000-11P	9 cm

4 Plastic Framed Upper Body

Dimensions	Product Code	Height
15x15 cm	5010-0001500-11P	9 cm

We Export to All Over
the World!

Enki

Export

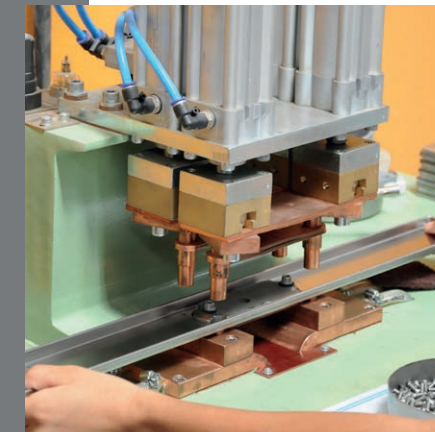
Your Solution Partner in Production

Become Our Global Business Partner

As Enki Drain, with our innovative design and engineering power, we deliver our high-quality drains to industrial kitchens, hotels, bathrooms and pool projects worldwide, and represent quality in the international market with our reliable drainage systems.

Factory & Production Images

With our innovative design approach and engineering strength, we offer reliable drainage systems for a wide range of uses, from industrial kitchens to hotels, from bathrooms to pools.



www.enkimetal.com.tr



Promotional Film

To learn more about our company, you can watch our promotional film by scanning the QR code below.



After-Sales Support

Enki

Support

We Are With You After Sales

Reliable Service, Uninterrupted Support

At Enki Metal, we stand behind every strainer we produce and provide full after-sales support. We quickly resolve any issues you may encounter and meticulously manage spare parts supply and shipping processes. Along with our high-quality products, we also offer you reliable service.

www.enkimetal.com.tr

We Are With You With After-Sales Assurance.

Each of our products is designed for long-lasting use and high performance.

However, if you encounter any problems, we never leave you alone by offering the following services.

Shipping Process Management

We follow the entire process meticulously from order to delivery.

Fast and Effective Solution

We solve any problems regarding our products as soon as possible.

Expert Support Team

We offer technical support with our experienced team.

Spare Parts Supply

We provide the spare parts you need quickly and reliably.

Water Goes, Quality Remains

Customer satisfaction is our top priority. We offer not only quality products but also reliable service to every customer who chooses Enki Metal.





Our Contact Informa-

+90 544 313 00 83

info@enkimetal.com.tr

Cumhuriyet, Çanakkale Asfaltı Cd. No:47/A, 35672
Menemen İzmir / TÜRKİYE

www.enkimetal.com.tr



Water Goes, Quality Remains