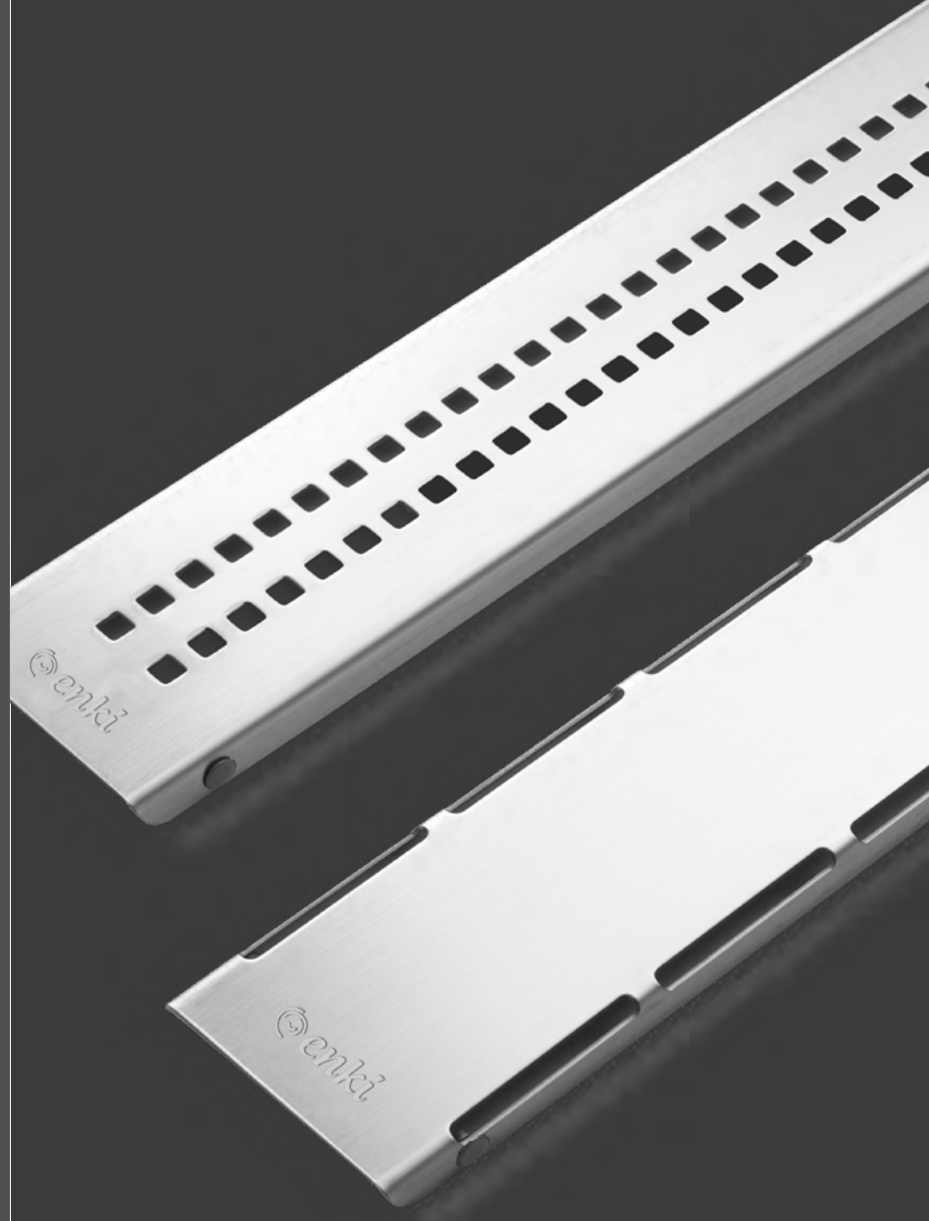


Product Catalogue

Ürün Kataloğu



2025



Shower Drains and Floor Drains

Duş Kanalları ve Yer Süzgeçleri

www.enkimetal.com.tr

6000 m² Enclosed
Production Area

Enki

Drain

Producing with 37 Years of Experience



Floor Drains



Shower Drains



and much more...

With Enki,
Water Drains,

We manufacture stainless steel plumbing drains, linear drains, and modular drainage channels for industrial areas, offering a wide range of products and continuously expanding our product variety through ongoing R&D efforts.

Our company, headquartered in İzmir, Turkey, operates within a 6,000 m² enclosed production facility with an annual production capacity of 1.5 million units.

Specializing in the design and supply of drainage systems for both indoor and outdoor applications, we provide comprehensive solutions. Leveraging the hygienic advantages of stainless steel, we continuously expand our service scope.

With our expertise in stainless steel, our dynamic and innovation-driven team, and our advanced production facilities—including hydraulic and eccentric presses, press brakes, and welding sections—we are fully capable of handling all aspects of design and manufacturing.

Simple,
Modern, and Elegant

Enki

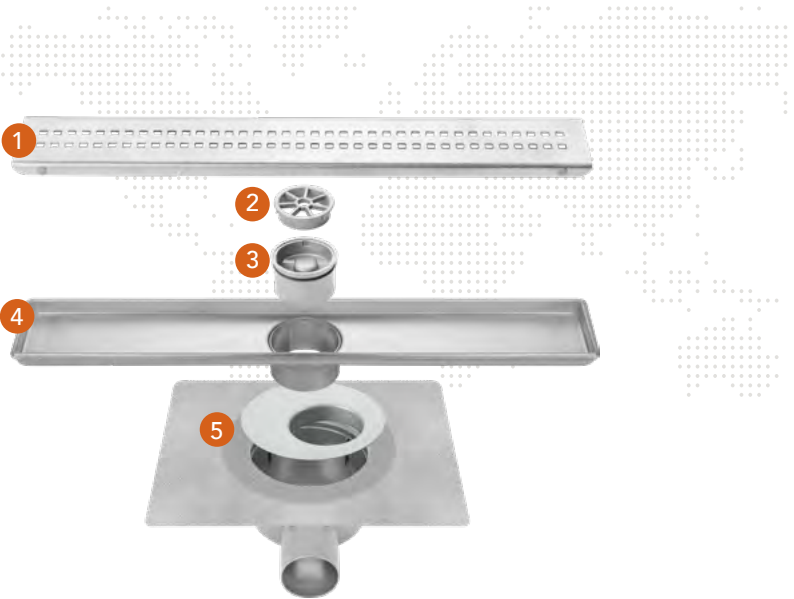
Line Pro
Stainless Steel Shower Drains

A Touch of Quality for
Your Bathrooms

The Line 6 Series seamlessly adapts to any décor with its simple and modern design. Its elegant lines and high-quality craftsmanship add a sophisticated touch to your living spaces.

Product Details

- 1. Stainless Steel Grate
- 2. Waste Trapping Grate
- 3. Anti-Odor Valve
- 4. Stainless Steel Body
- 5. Waterproofing Kit



Product
Advantages



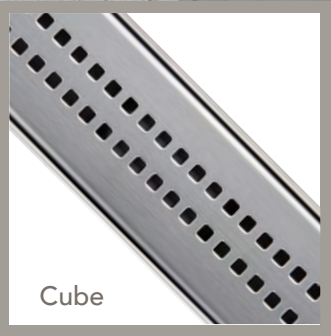
Sliding Waterproofing Bridge, Stainless Steel Body, Odor-Blocking System, Practical Shower Set

Grate Types

Create Your Desired Style
with Cube and Plain
Grate Options



Plain



Cube

Easy Cleaning

Thanks to its stainless steel material, it is easy to clean and remains hygienic.

Anti Odor Valve

3

Thanks to its special mechanism, the Anti-Odor Valve system opens only when water flows. In this way, it acts as a protective feature.



Length	Width (b)	Height (h)	Outlet Dia.	Grate Type	Product Code	Qty per Box
40 cm	6 cm	4,5 cm	Q50	Plain	2601-0304000-01V	10
60 cm	6 cm	4,5 cm	Q50	Plain	2601-0306000-01V	10
40 cm	6 cm	4,5 cm	Q50	Cube	2601-0404000-01V	10
60 cm	6 cm	4,5 cm	Q50	Cube	2601-0406000-01V	10

One Step Ahead in Waterproofing

Enki

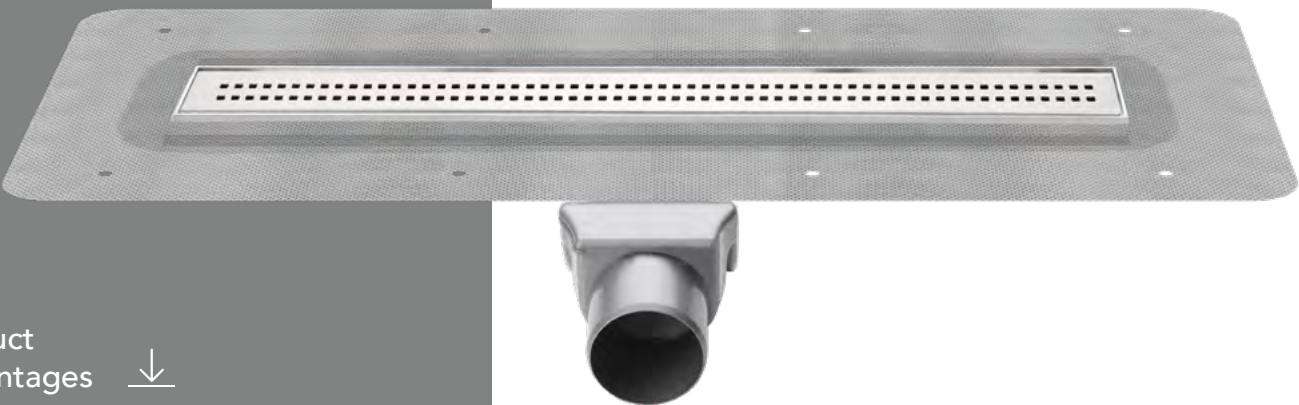
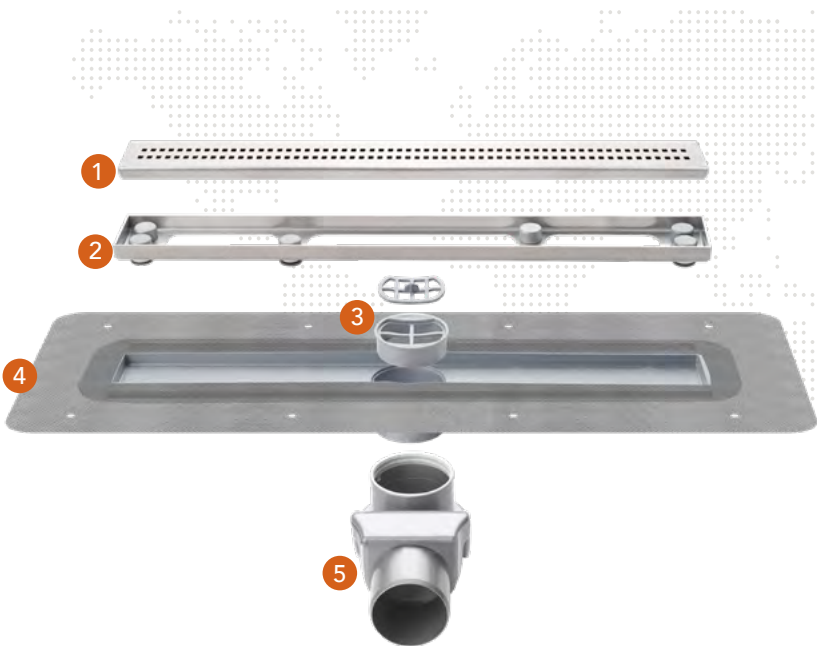
Line Pro Slim Cube

A Seamless Experience

The twin drain feature and the textile skirt on the upper body provide an advantage in terms of waterproofing. The textile skirt helps the product integrate with the screed and strengthens the waterproofing.

Product Details

- 1. Stainless Steel Grate
- 2. Grate Height Adjustment Frame
- 3. Anti-Odor-Blocking Flap
- 4. Stainless Steel Body
- 5. Waterproofing Kit
- 6. S. Type 360 rotatable Bottom Body



Grate Types

Slim Body combines elegance and functionality in one.



Product Advantages

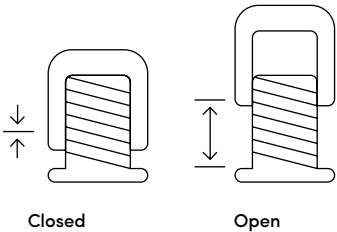


Textile Skirt

Make a Difference with the Textile Skirt
100% Compatible with All Sliding
Waterproofing Products!

Adjustable Height

The adjustable height feet make installation easier and allow for the pouring of slope concrete at the desired height. This enables positioning of the height up to 1 cm higher.



Length	Width (b)	Height (h)	Outlet Dia.	Grate Type	Product Code	Qty per Box
40 cm	4,5 cm	7,8 cm	Q50	Cube	2211-0484081-11P	50
50 cm	4,5 cm	7,8 cm	Q50	Cube	2211-0485081-11P	40
60 cm	4,5 cm	7,8 cm	Q50	Cube	2211-0486081-11P	30

Hidden Shower Drain

Enki

Line Pro Ceramic

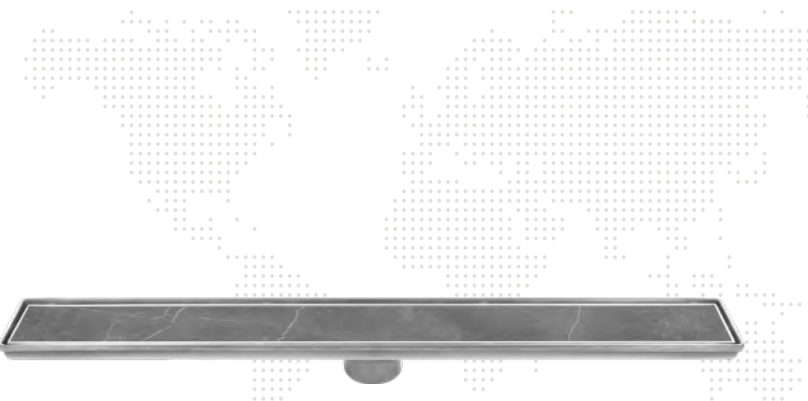
Ceramic Compatible Shower Drain

Seamlessly Integrate with the Décor

The Line 6 Series, with its simple and modern design, adapts to any décor. Its elegant lines and high-quality craftsmanship add a sophisticated touch to your living spaces.

Product Details

The ceramic-compatible drain is a practical and aesthetic drainage solution for modern bathrooms. You can choose this innovative solution to achieve a flawless design and hygiene in your bathroom.



Ceramic Applied Visual



Product Advantages



Grate Type

Seamlessly integrate with the floor thanks to the ceramic-compatible grate type.



Ceramic Co.

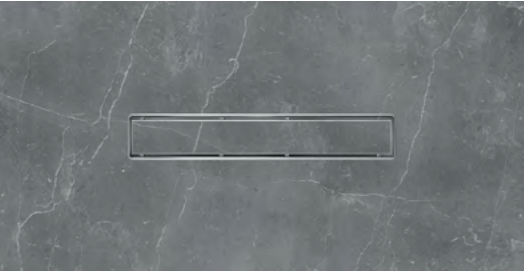
Easy Cleaning

It is easy to clean thanks to its stainless steel material and remains hygienic.

Hidden Drainage System

Thanks to its special mechanism, the Anti-Odor Valve system opens only when water flows. In this way, it acts as a protective feature.

You can place any ceramic you want inside



Length	Width (b)	Height (h)	Outlet Dia.	Grate Type	Product Code	Qty per Box
40 cm	6 cm	4,5 cm	Q50	Ceramic Compatible	2601-0504000-01P	10
60 cm	6 cm	4,5 cm	Q50	Ceramic Compatible	2601-0506000-01P	10

The Right Waterproofing
The Right Brand



Enki

Line Insulation
Waterproofing Kits



Waterproofing Fabric

Bathrooms and shower areas are among the spaces with the most intense water usage. If proper waterproofing is not done in these areas, water leaks may occur over time, potentially causing significant damage to the structural elements. Therefore, using specially designed waterproofing kits provides long-

Product Details

The special textile fabrics included in the waterproofing kits provide extra durability and flexibility to the waterproofing materials. When used with waterproofing mortar or liquid membrane, these fabrics ensure perfect adhesion to the surface and prevent crack

↙ Example Usage

Product
Advantages ↘



These Waterproofing Kits are used together with Line Pro, Line Pro Slim, and Line Square Pro products.



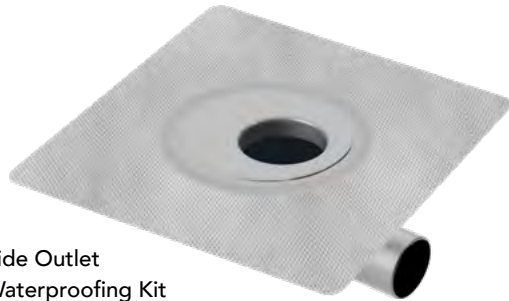
Bottom Outlet Waterproofing Kit

Avoid Unpleasant Surprises

Renovations of bathrooms and shower areas are costly and tiring tasks. Properly done waterproofing will protect you from these issues for many years.

Secure Your Drain to the Waterproofing

Secure your expenses with waterproofing application using textile membrane waterproofing kits.



Side Outlet
Waterproofing Kit

Product Code	Outlet Diameter	Outlet Direction	Quantity per Box
6010-0080050-11P	Q50	Side	100
6010-0080052-11P	Q50	Bottom	100

The Meeting Point of
Elegance and Functionality

Enki

Line Eco S

Economic Shower Drains

A Touch of Quality for
Your Bathrooms

Our elegant, slim-grated Slim
Plain model is the perfect choice
to transform your bathrooms
and kitchens in both a stylish and
functional way.

Grates & Colors

The Plain Grate Model is
available in Stainless Steel
and Black colors.



Product Details

- 1. Stainless Steel Grate
- 2. Waste Trapping Grate
- 3. Waterproofing Skirted Plastic Body
- 4. Type 360 rotatable Bottom Body



Product
Advantages



Elegant Design

With its slim grate design, it is stylish
and high-quality from every angle.

Rotatable S-Type Tray

With its 360° rotatable design, it offers
easy installation. The S-type bottom tray
prevents unpleasant odors.

Color Option



Length	Width (b)	Height (h)	Outlet Dia.	Grate Type	Product Code	Qty per Box	Color
40 cm	5,5 cm	8,6 cm	Q50	Plain	2430-0374081-11K	52	Stainless Steel
60 cm	5,5 cm	8,6 cm	Q50	Plain	2430-0376081-11K	32	Stainless Steel
40 cm	5,5 cm	8,6 cm	Q50	Plain	2430-0374081-31K	52	Black
60 cm	5,5 cm	8,6 cm	Q50	Plain	2430-0376081-31K	32	Black

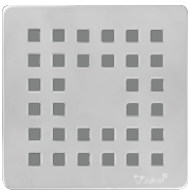
Quality and
Functionality in One

A Touch of Quality for
Your Bathrooms

Self-Sloped and Toothed Bottom,
Odor-Secure Plumbing Drains

Grate Types

It offers stylish solutions with
the circle-type grate and
square grate models.



10x10cm Kare



Circle



Enki

Square Eco

Floor Drains

Product Details

The Enki Square Eco product
uses a 304-grade stainless steel
grate and has a plastic body. The
bottom tray is rotatable 360°.

Enki Square Eco 10x10 cm
Bottom Outlet



Product
Advantages



Square Eco 15x15 cm
Side Outlet



304 Grade Stainless Steel

The stainless steel grate provides the
advantage of long-lasting use.

More Durable Design

The toothed design of the bottom
body and surface increases the
adhesion strength to the screed.

Square Circle

EnkiSquare-Circle, with its circular design,
adds elegance to your modern living
spaces while making a difference with its
superior performance.



Grate Sizes	Height	Outlet Dia.	Outlet Dir.	Grate Type	Product Code	Qty per Box
10x10 cm	6,5 cm	Q50	Side	Cube	4011-0701050-11P	50
10x10 cm	4,5 cm	Q50	Bottom	Cube	4012-0701051-11P	60
15x15 cm	6,5 cm	Q50	Side	Cube	4011-0701550-11P	32
15x15 cm	6,5 cm	Q70	Side	Cube	4011-0701570-11P	32
15x15 cm	8,5 cm	Q50	Bottom	Cube	4012-0701551-11P	27
10x10 cm	6,5 cm	Q50	Side	Circle	4010-2801050-11P	50

Rediscover Quality

Enki

Square Pro

Floor Drains

A Touch of Quality for Your Bathrooms

Enjoy the benefit of using your shower areas for many years without any issues, thanks to the high-quality materials used in the Square Pro series.

Example Usage

Product Details

- 1. Stainless Steel Grate
- 2. Waste Trapping Grate
- 3. Anti-Odor Valve Flap
- 4. Stainless Steel Bottom Body



10x10 cm



15x15 cm



Product Advantages

304 Quality Stainless Steel
Provides the advantage of long-term use thanks to the stainless steel grate.

More Durable Design
The notched design of the lower body and bottom surface increases adhesion strength to the screed.

Anti-Odor Valve
Thanks to its special mechanism, the Anti-Odor Valve system acts as a protective barrier by opening only when water flows.



Grate Dimensions	Height	Outlet Dia.	Grid Type	Product Code	Qty per Box	Anti Odor
10x10 cm	4 cm	Q50	Cube	3901-0701000-01P	39	Klape
15x15 cm	4 cm	Q50	Cube	3901-0701500-01P	32	Klape

Quality and
Functionality in One

Enki

Square Pro S

Floor Drains

Provides Long-Lasting Quality Usage

Enjoy long-lasting, hassle-free
use of your shower areas with the
high-quality materials used in the
Square Pro S series.

Example Usage

Product Details

- 1. Stainless Steel Grate
- 2. Waste Trapping Grate
- 3. Stainless Steel Bottom Body
- 4. S-Type Bottom Tray



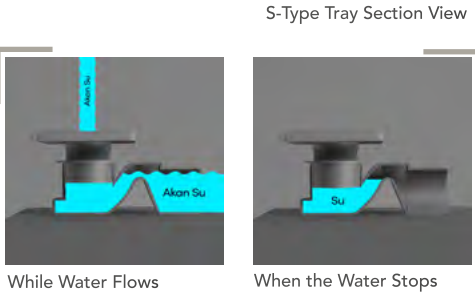
Product
Details

304 Grade Stainless Steel

The stainless steel grate ensures long-
lasting use. Enjoy hygiene and quality.

No More Unpleasant Odors with the S-Type Bottom Tray!

Thanks to its special mechanism, the
Anti Odor Valve system only opens when
water flows. This serves as a protective
feature.



Grate Sizes	Height	Outlet Dia.	Grate Type	Product Code	Qty per Box	Odor Preventing
10x10 cm	7 cm	Q50	Cube	3900-0701081-01K	39	Klape
15x15 cm	7 cm	Q50	Cube	3900-0701581-01K	32	Klape

Stay Ahead in Application
& Waterproofing

Enki

Square Pro High

Stainless Steel Floor Drain

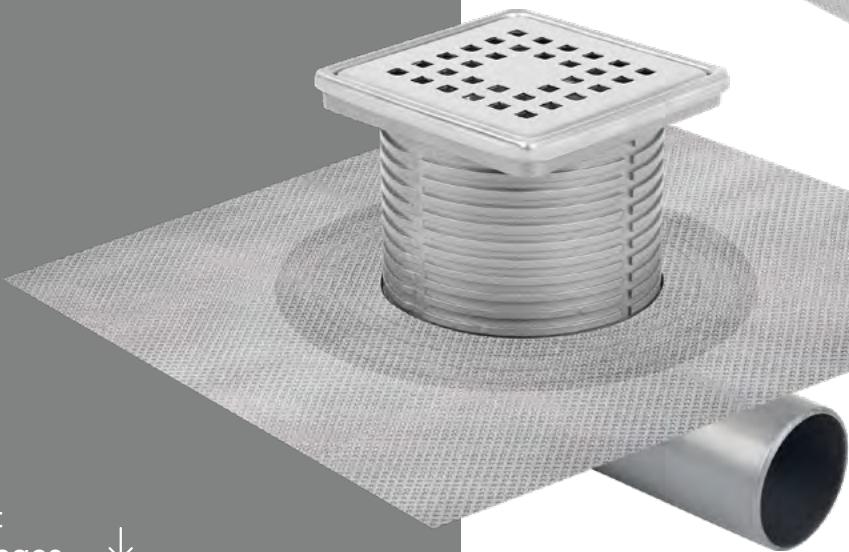
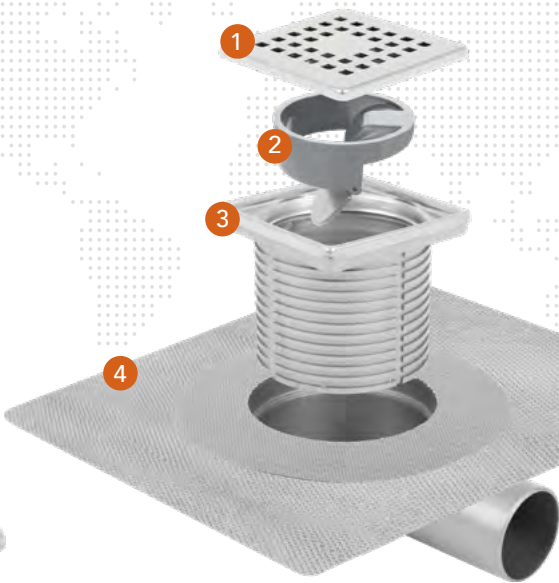
Water Drain, Quality Stays With You

Experience the Enki quality with features like a 304-grade stainless steel frame and grate, unlimited height adjustment with the riser, waterless odor preventer, twin drainage feature, and a mesh skirt integrated into the bottom body.

Example Usage

Product Details

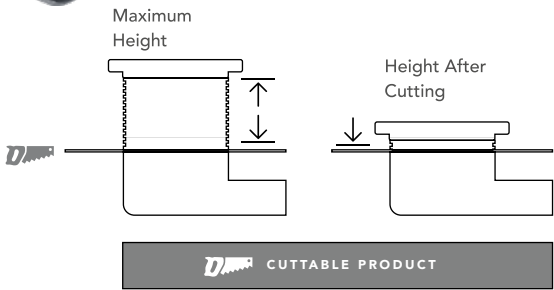
- 1. Stainless Steel Grate
- 2. Anti - Odor Valve
- 3. Stainless Steel Bottom Body
- 4. Waterproofing Fabric Bottom Tray



Product Advantages

Easily Adjust to Your Desired Height

Thanks to the cuttable bottom plate, you can easily adjust the product to your floor height by sawing the product for easy installation.



Grate Sizes	Height	Outlet Dia.	Outlet Dir.	Grate Type	Product Code	Qty per Box
10x10 cm	From 5.5 cm to 14.5 cm	Q50	Side	Cube	3101-0781050-01P	60
10x10 cm	From 9,5 cm to 18,5 cm	Q70	Side	Cube	3101-0781070-01P	50
10x10 cm	From 12,5 cm to 21,5 cm	Q100	Side	Cube	3101-0781010-01P	35
10x10 cm	From 10 cm to 19 cm	Q50	Bottom	Cube	3101-0781052-01P	60
10x10 cm	From 10 cm to 19 cm	Q70	Bottom	Cube	3101-0781072-01P	50
10x10 cm	From 8 cm to 17 cm	Q100	Bottom	Cube	3101-0781013-01P	30
15x15 cm	From 10 cm to 19 cm	Q50	Side	Cube	3101-0781550-01P	50
15x15 cm	From 10 cm to 19 cm	Q70	Side	Cube	3101-0781570-01P	50
15x15 cm	From 8 cm to 17 cm	Q100	Side	Cube	3101-0781510-01P	35
15x15 cm	From 10 cm to 19 cm	Q50	Bottom	Cube	3101-0781552-11P	50
15x15 cm	From 10 cm to 19 cm	Q70	Bottom	Cube	3101-0781572-11P	50
15x15 cm	From 8 cm to 17 cm	Q100	Bottom	Cube	3101-0781513-11P	32

One Step Ahead in Waterproofing

Quality is Hidden in the Details

Thanks to the mesh skirt and laminated textile layer, it is 100% compatible with all applied waterproofing materials.

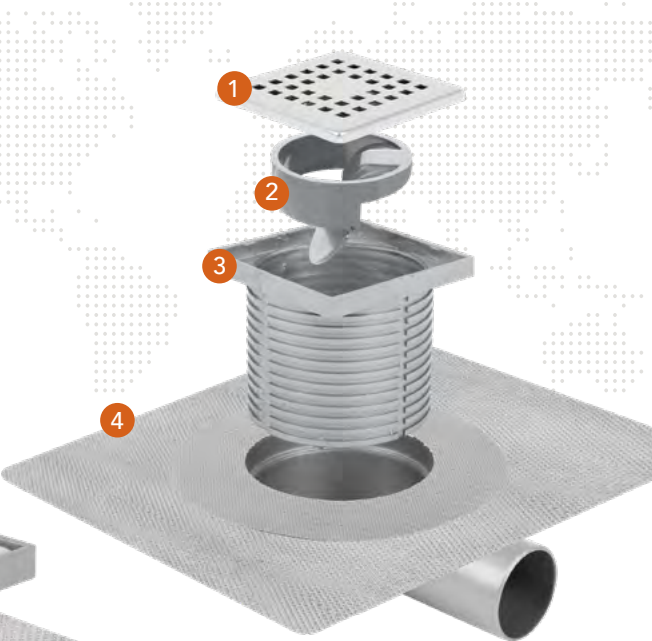
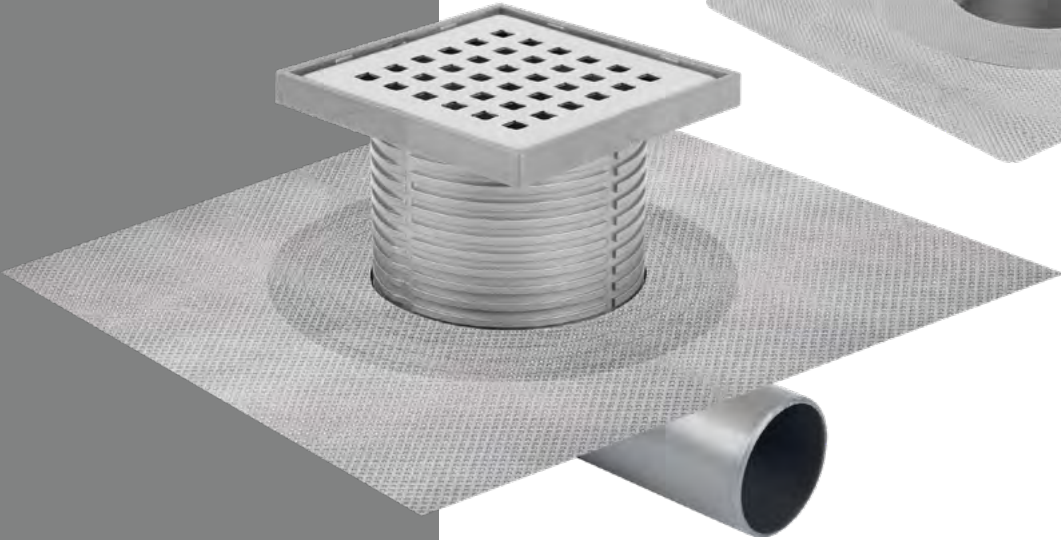
Experience 304 quality stainless steel frame and grill, unlimited height adjustment with lifting accessory, wet/dry odor preventer, twin drain feature and mesh skirt integrated into the lower body.

Example Usage

Enki Square Eco High Plastic Cased Floor Drain

Product Details

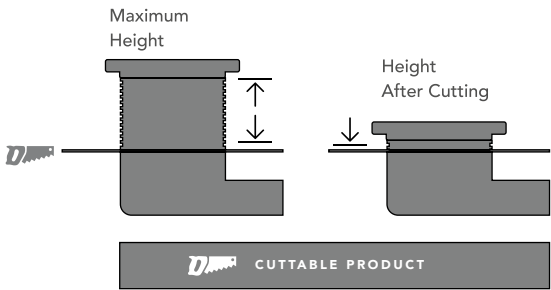
- 1. Stainless Steel Grate
- 2. Anti-Odor Valve
- 3. Plastic Bottom Case
- 4. Insulation Fabric Bottom Tray



Product Advantages

Easily Adjust to Your Desired Height.

Thanks to the cuttable base, you can easily apply the product by sawing it to fit your floor height.



Grate Dimensions	Height	Outlet Dia.	Outlet Dir.	Grate Type	Product Code	Qty/Box
10x10 cm	From 10 cm to 19 cm	Q50	Side	Cube	3101-0711050-11P	60
10x10 cm	From 10 cm to 19 cm	Q70	Side	Cube	3101-0781070-11P	50
10x10 cm	From 8 cm to 17 cm	Q100	Side	Cube	3101-0781010-11P	35
10x10 cm	From 10 cm to 19 cm	Q50	Bottom	Cube	3101-0781052-11P	60
10x10 cm	From 10 cm to 19 cm	Q70	Bottom	Cube	3101-0781072-11P	50
10x10 cm	From 8 cm to 17 cm	Q100	Bottom	Cube	3101-0781013-11P	30
15x15 cm	From 10 cm to 19 cm	Q50	Side	Cube	3101-0781550-11P	50
15x15 cm	From 10 cm to 19 cm	Q70	Side	Cube	3101-0781570-11P	50
15x15 cm	From 8 cm to 17 cm	Q100	Side	Cube	3101-0781510-11P	35
15x15 cm	From 10 cm to 19 cm	Q50	Bottom	Cube	3101-0781552-11P	50
15x15 cm	From 10 cm to 19 cm	Q70	Bottom	Cube	3101-0781572-11P	50
15x15 cm	From 8 cm to 17 cm	Q100	Bottom	Cube	3101-0781513-11P	25

The Hidden Hero of Your Bathrooms

Enki

Square Pro Ceramic

Ceramic Compatible Floor Drain

Perfect Compatibility

Our drains, seamlessly integrated with floor coverings, combine elegance and invisible drainage comfort in bathrooms, kitchens, and other wet areas thanks to their innovative design.

Usage Method

Thanks to the advantage of dual-direction use, you can either apply ceramic inside and use it that way or flip it over to use it as a plain grate.

Product Details

- 1. Stainless Steel Grate
- 2. Anti Odor Valve
- 3. Full 304 Stainless Steel Body
- 4. Waste Trapping Grate

Product Advantages

One Strainer, Two Uses!

- 2 Add flexibility to your projects with its double-sided usable structure. The new plain ceramic-compatible grate can be flipped over and used by placing ceramic inside.
- 1 Use it plain as a flat grate if desired.
- 3 Or flip it to the other side and place ceramic inside.

Grate Dimensions	Height	Outlet Dia.	Grate Type	Product Code	Qty/Box
10x10 cm	2 cm	Q50	Ceramic	3901-0501000-01P	20
15x15 cm	2 cm	Q50	Ceramic	3901-0501500-01P	20

An End to Bad Odors
and Pests!

Enki
Odor Preventers
No Room for Bad Odors and Pests!

Anti-Odor Valve

Closed View

Prevents bad odors by remaining closed when water is not flowing.



Open View

Opens only when water is flowing



Clean Spaces,
Spacious Spaces!

Odor blockers provide a hygienic and comfortable environment by preventing bad odors and pests that may occur in drainage systems; they offer a long-lasting and reliable use thanks to their durable material and smart mechanism.

Anti-Odor Flaps

The Anti-Odor Valve flap is a backflow prevention mechanism designed to prevent the spread of bad odors in wastewater systems, offering hygienic and comfortable use. It blocks unpleasant odors, pests, and harmful gases from the sewer, ensuring indoor air quality remains clean and fresh.

How it works

1



Waterless Odor Prevention Flap

2



Anti-Odor Valve:
Waterless Anti-Odor Flap

1 Waterless Odor Prevention Flap

Feature	Product Code	Height	Product Price
Waterless	5011000-11P	3 cm	24,00 €

Compatible Models
EnkiSquare-Eco

2 Waterless Odor Prevention Flap

Feature	Product Code	Height
Waterless	5041-0000000-11P	3 cm

Compatible Models	
EnkiLine-Pro	EnkiLine-Pro Ceramic
EnkiSquare-Pro Ceramic	EnkiLine-Eco S

304 Quality
Stainless Steel

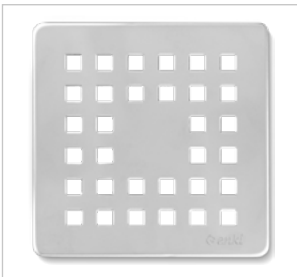
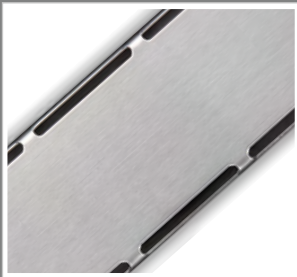
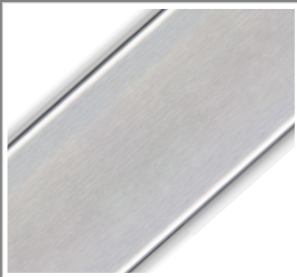
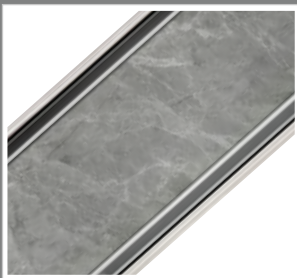
Enki

Grates
304 Quality Stainless Steel

Strong, Durable and
Timeless!

Our 304 quality stainless steel gratings provide maximum resistance to water, moisture and chemicals with its superior corrosion resistance and long-lasting structure, while adding a stylish touch to your spaces with its aesthetic design. Since it is stainless steel, it is also very easy to clean.

↙ Applied Visuals



Ceramic Compatible Grid

Length	Product Code
40 cm	-
60 cm	-

Compatible Models	EnkiLine-Pro Ceramic
-------------------	----------------------

Plain Grate

Length	Product Code	Color
40 cm	5430340-01P	Stainless
60 cm	5430360-01P	Stainless
40 cm	5430340-31P	Black
60 cm	5430360-31P	Black

Compatible Models	EnkiLine-Eco S
-------------------	----------------

Plain Grate

Length	Product Code
40 cm	5600340-01P
60 cm	5600360-01P

Compatible Models	EnkiLine-Pro	EnkiLine-Eco P
-------------------	--------------	----------------

Cube Grate

Length	Product Code
40 cm	5600440-01P
60 cm	5600460-01P

Compatible Models	EnkiLine-Eco S
-------------------	----------------

Square Cube Grate

Grid Sizes	Product Code
10x10 cm	5900710-01P
15x15 cm	5900715-01P

Compatible Models	EnkiSquare-Pro	EnkiSquare-Eco
-------------------	----------------	----------------

Post-Sale
Full Support

Enki
Frames
Sealing and Aesthetics

With Auxiliary Products
Full After Sales Support
We provide

The strainer frame is a structural
element that secures the stainless
steel gratings and ensures a
harmonious assembly with the
floor. The frame ensures efficient
drainage of water and increases
the durability and longevity of the
strainer.

↙ Exploded Image



Stainless Steel
Framed Top
Body

Plastic
Framed Top
Body



Stainless Steel
Framed Top
Body

Plastic
Framed Top
Body

1 Top Body with Stainless Frame

Sizes	Product Code	Height
10x10 cm	5050-0001000-01P	9 cm

2 Top Body with Plastic Frame

Sizes	Product Code	Height
10x10 cm	5010-0001000-11P	9 cm

3 Top Body with Stainless Frame

Sizes	Product Code	Height
15x15 cm	5050-0001500-01P	9 cm

4 Top Body with Plastic Frame

Sizes	Product Code	Height
15x15 cm	5010-0001500-11P	9 cm

We Export to the
Whole World!

Enki

Export

Your Solution Partner in Production

Global Business Become Our Partner

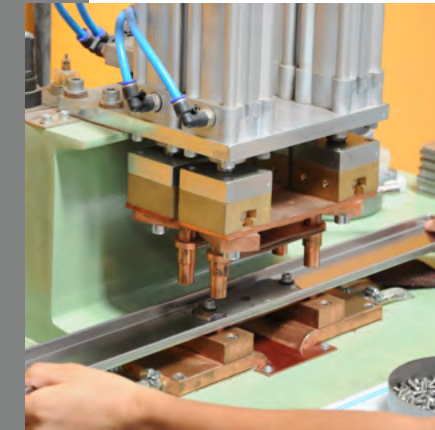
As Enki Drain, we deliver our high quality drains to industrial kitchens, hotels, bathrooms and pool projects worldwide with our innovative design and engineering power, and represent quality in the international market with our reliable drain systems.

www.enkimetal.com.tr



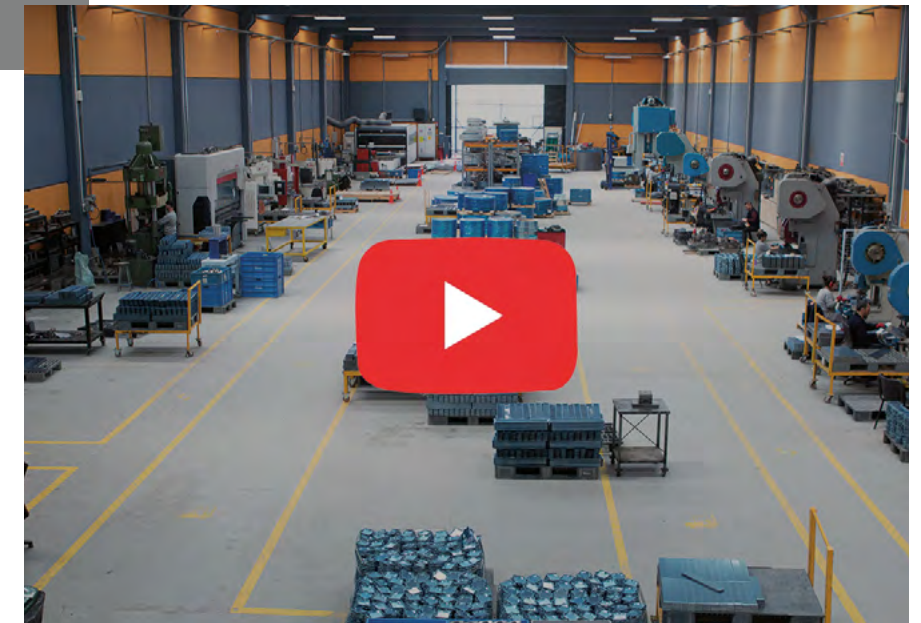
Factory & Production Visuals

With our innovative design approach and engineering strength, we offer reliable evacuation systems for a wide range of applications, from industrial kitchens to hotels, from bathrooms to pools.



Presentation Film

To learn more about our company, you can watch our promotional movie by scanning the QR code below.





Contact Information



+90 544 313 00 83



info@enkimetal.com.tr

Cumhuriyet, Çanakkale Asfaltı Cd. No:47/A, 35672
Menemen İzmir / TÜRKİYE

www.enkimetal.com.tr



Water Goes, Quality Stays